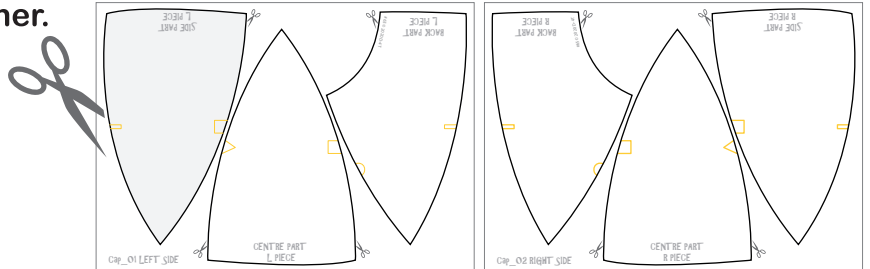


How to Make ARCHITECTURAL Cap

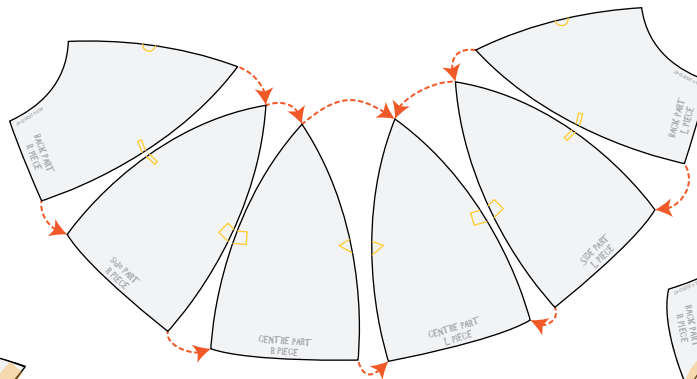
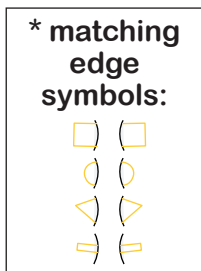
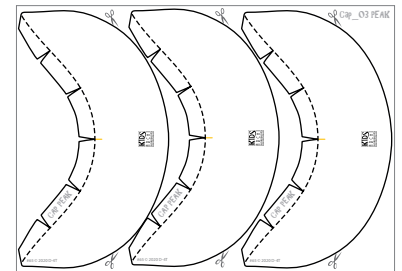
You can create a cap with drawings or 3D shapes of your favourite buildings in the city.

You Will Need:

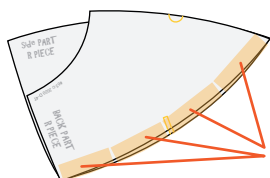
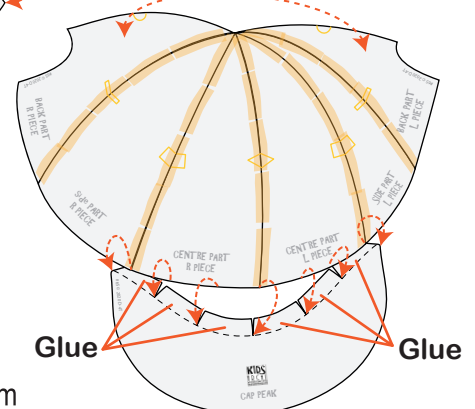
- **A4 paper (80-120 g/m2)** If you think that standard printing paper is too thin, you can use two pages collated together.
- **Scissors,**
- **Glue,**
- **Sellotape,**
- **Pens, markers or crayons**



1. Print out attached templates on A4 paper and cut it out.
2. Assembly together all the pieces in order, matching edges with (*) symbols:
(Back Part R - Side Part R - Centre Part R - Centre Part L - Side Part L - Back Part L & Cap Peak)



Adjust the Cap to fit your head size overlapping Back Parts



Sellotape

3. Put together two consecutive pieces matching (*) symbols
Fold two pieces back to back and use small pieces of sellotape to join them together along the matching edge.
Repeat the process with all 6 head Cap pieces, **leaving the edge marked () open.**
4. When it is ready, attach it to the Cap Peak, aligning () () Line with the middle of the Peak, Glueing the tabs to the back of the Centre Part pieces.
5. Adjust the Cap size overlapping Back Parts together and securing them to the right size to fit your head.
3. Draw buildings and attach them to the hat.
You can create your own city, or draw the buildings that you know from your favourite place.

