

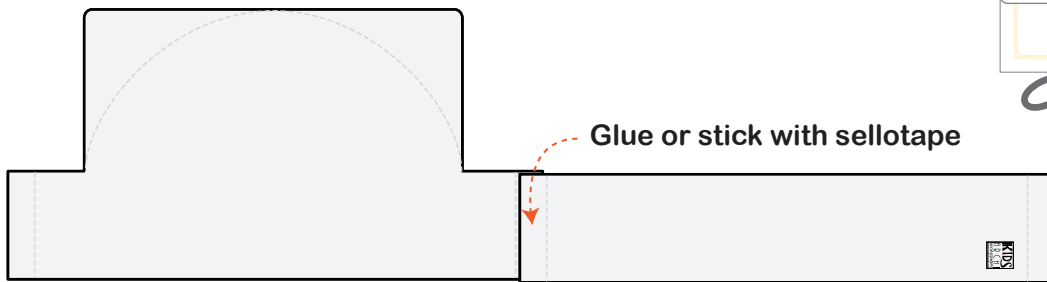
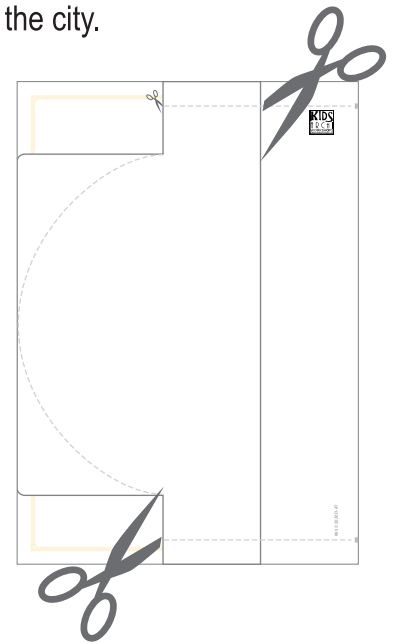
How to Make ARCHITECTURAL Hat

You can create a hat with drawings or 3D shapes of your favourite buildings in the city.

You Will Need:

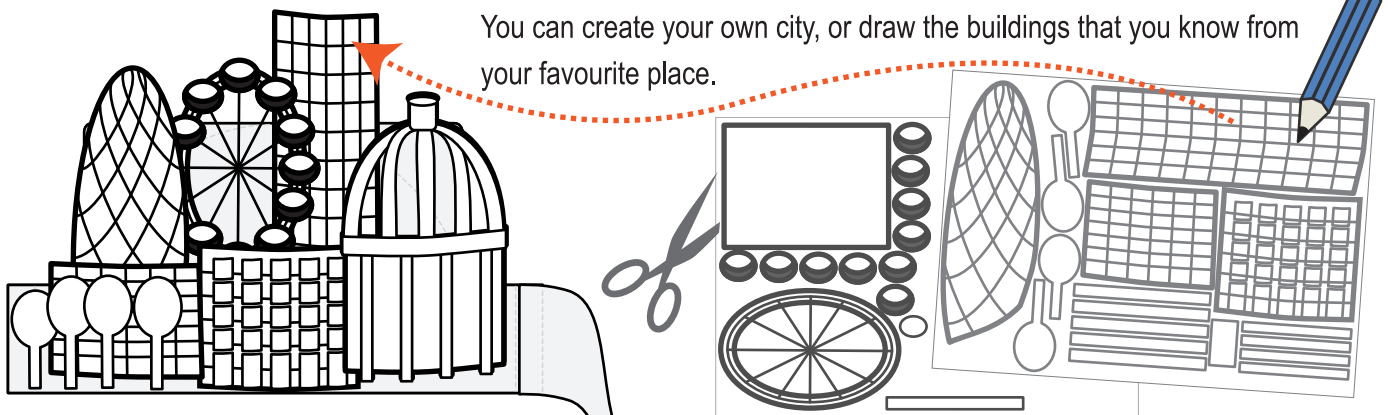
- A4 paper (80-120 g/m2) If you think normal printing paper is too thin, you can use two pages collated together.
- Scissors,
- Glue,
- Sellotape,
- Pens, markers or crayons

1. Print out attached template on A4 paper and cut it out.
2. Assembly together the two parts, glueing the tabs together on one side.



3. On a spare piece of paper draw shapes of the buildings, trees etc., cut them out and stick to the front of your hat.

You can create your own city, or draw the buildings that you know from your favourite place.



4. Adjusting the Hat strips to fit your head, overlapping strips and sticking them together.

