

# HEXAGONAL KALEIDOCYCLE

The Ring of Six Tetrahedra



GLUE

GLUE

HEXAGONAL  
KALEIDOCYCLE

GLUE

GLUE

GLUE

1. Cut out the shape following THICK BLACK OUTLINE.
2. Fold along all 14 DOTTED LINES.
3. Put glue on the GREY TABS.
4. Glue opposite pairs to form tetrahedra.

Number of faces: 24  
Number of edges: 30  
Number of vertices: 12

HEXAGONAL  
KALEIDOCYCLE

GLUE

GLUE



HEXAGONAL KALEIDOCYCLE  
The Ring of Six Tetrahedra

GLUE

GLUE

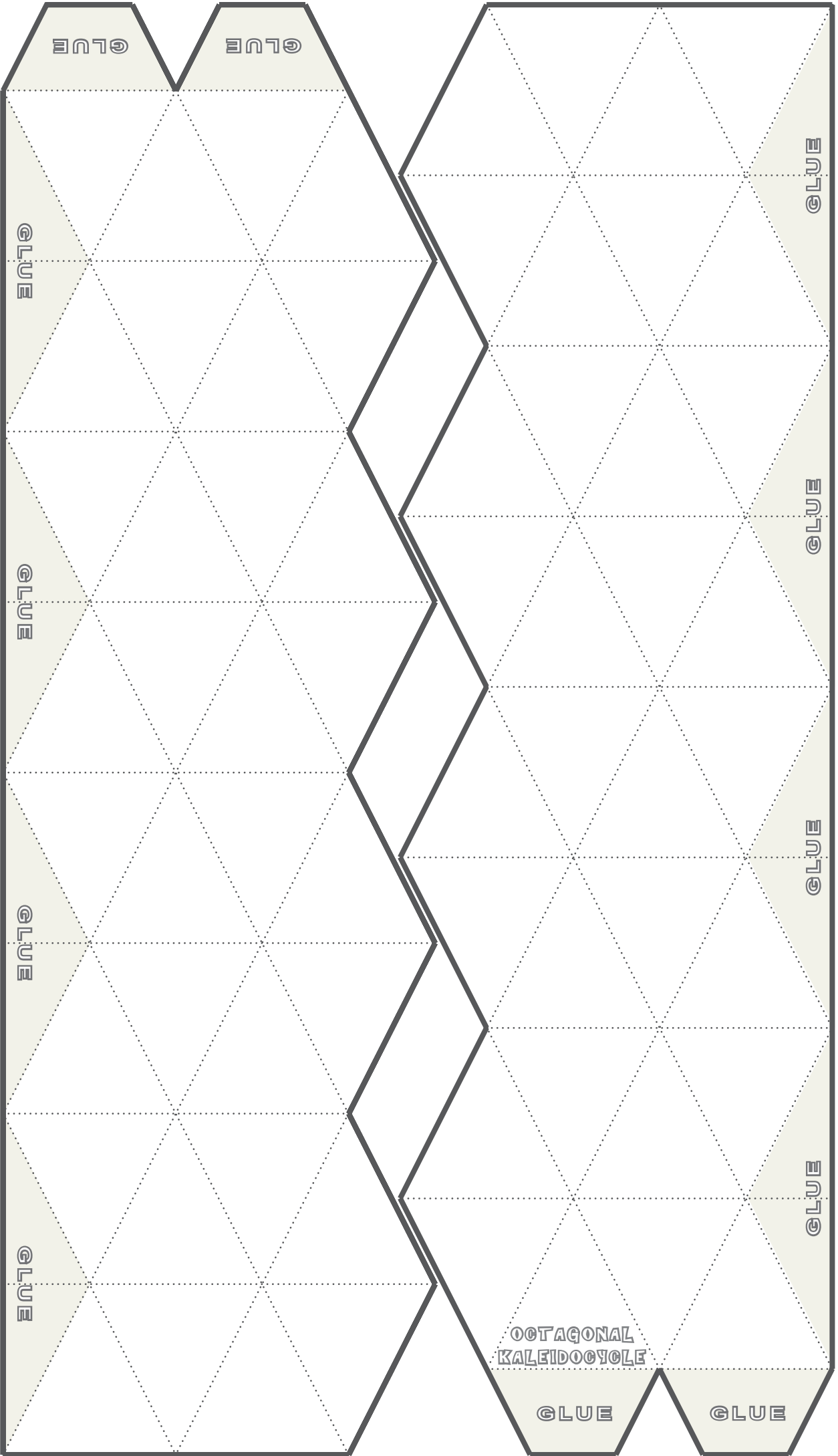
GLUE

1. Cut out the shape following **THICK BLACK OUTLINE**.
2. Fold along all **18 DOTTED LINES**.
3. Put glue on the **GREY TABS**.
4. Glue opposite parts to form tetrahedra.

Number of faces: 32  
 Number of edges: 40  
 Number of vertices: 16

# OCTAGONAL KALEIDOCYCLE

The Ring of Eight Tetrahedra



1. Cut out the shape following **THICK BLACK OUTLINE**.
2. Fold along all **18 DOTTED LINES**.
3. Put glue on the **GREY TABS**.
4. Glue opposite parts to form tetrahedra.

# OCTAGONAL KALEIDOCYCLE

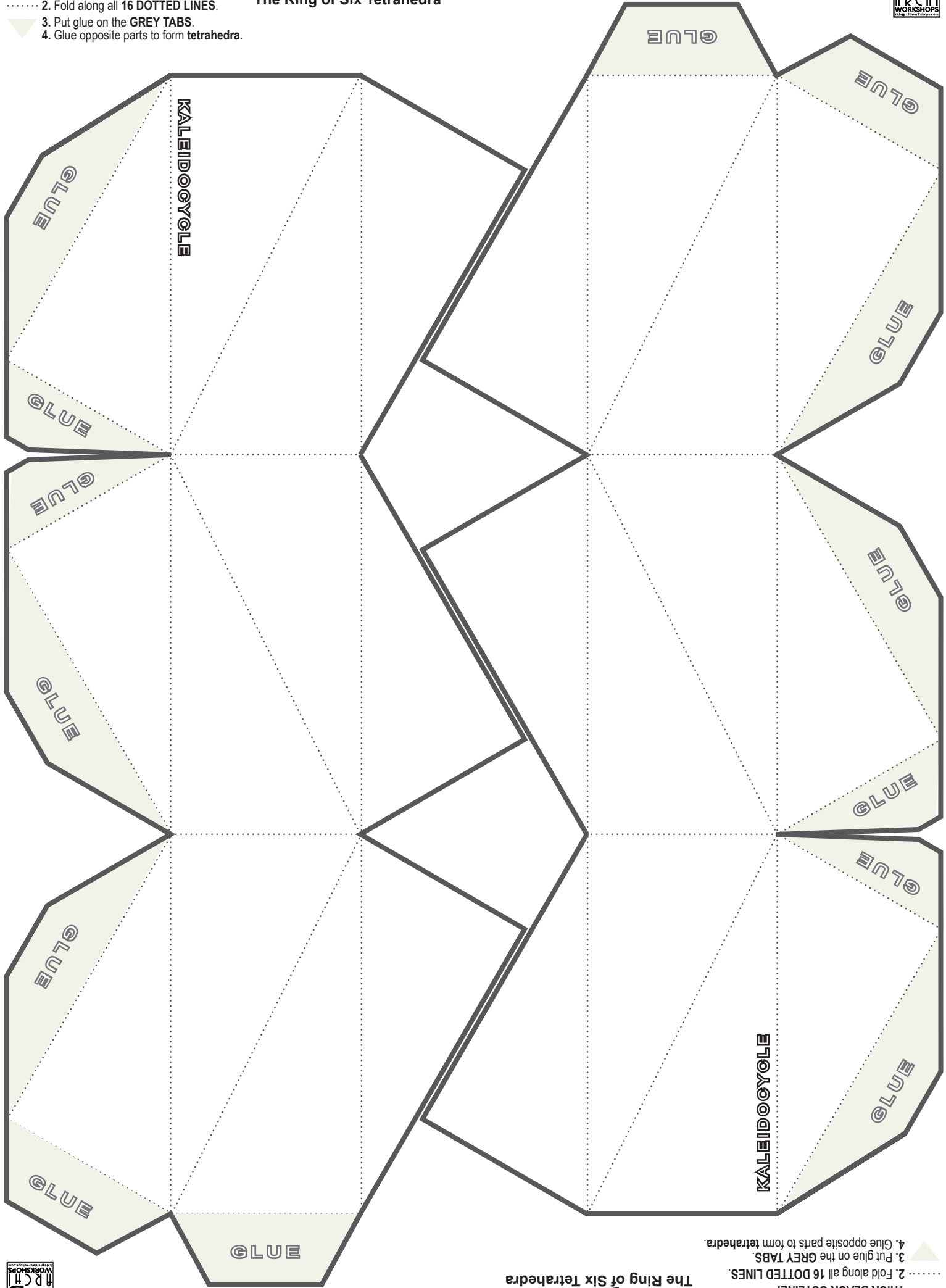
The Ring of Eight Tetrahedra

Number of faces: 32  
 Number of edges: 40  
 Number of vertices: 16

# HEXAGONAL KALEIDOCYCLE

The Ring of Six Tetrahedra

1. Cut out the shape following THICK BLACK OUTLINE.
2. Fold along all 16 DOTTED LINES.
3. Put glue on the GREY TABS.
4. Glue opposite parts to form tetrahedra.

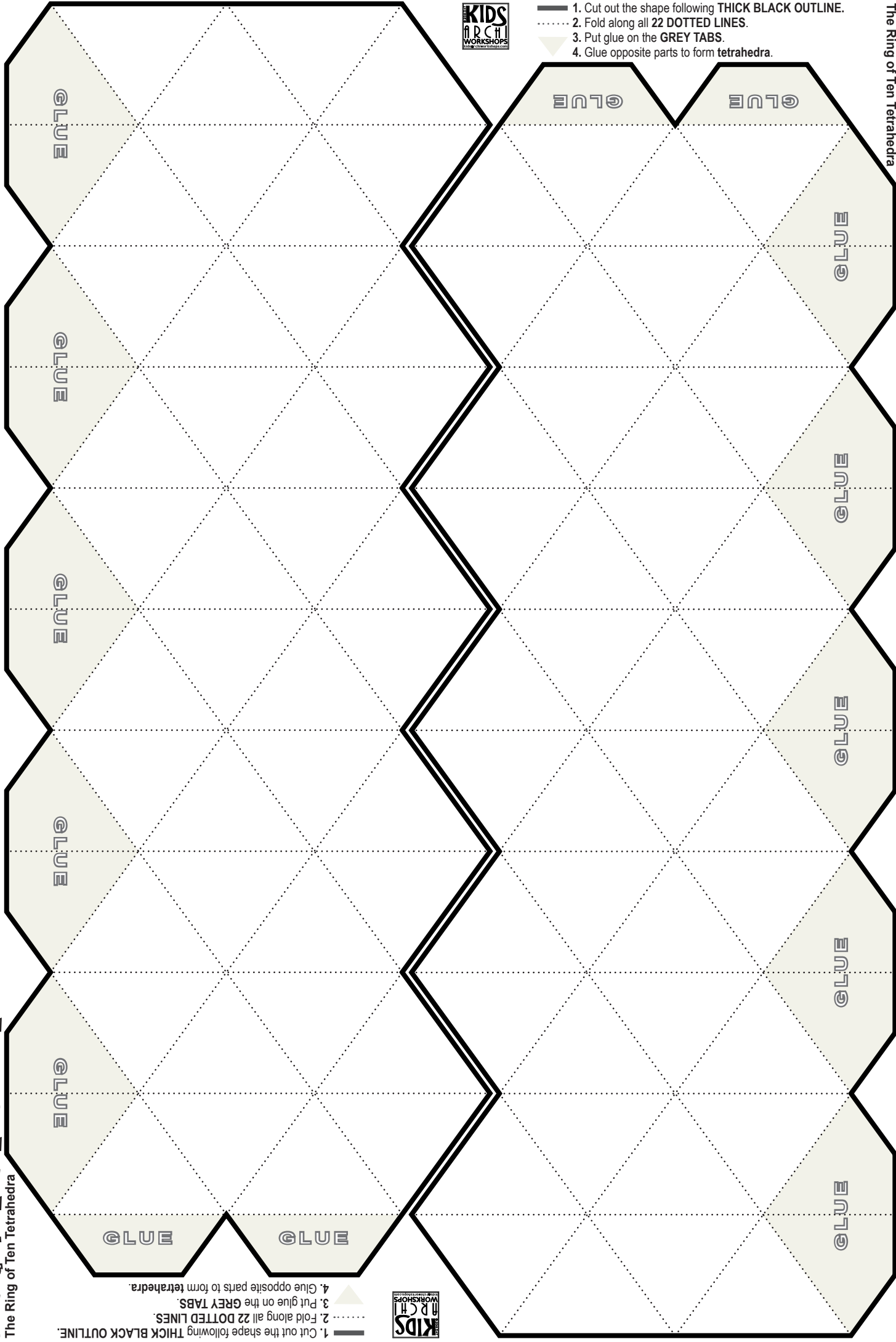


1. Cut out the shape following THICK BLACK OUTLINE.
2. Fold along all 16 DOTTED LINES.
3. Put glue on the GREY TABS.
4. Glue opposite parts to form tetrahedra.

# DEXAGONAL KALEIDOCYCLE

The Ring of Ten Tetrahedra

- 1. Cut out the shape following THICK BLACK OUTLINE.
- 2. Fold along all 22 DOTTED LINES.
- 3. Put glue on the GREY TABS.
- 4. Glue opposite parts to form tetrahedra.



- 1. Cut out the shape following THICK BLACK OUTLINE.
- 2. Fold along all 22 DOTTED LINES.
- 3. Put glue on the GREY TABS.
- 4. Glue opposite parts to form tetrahedra.

# DEXAGONAL KALEIDOCYCLE

The Ring of Ten Tetrahedra